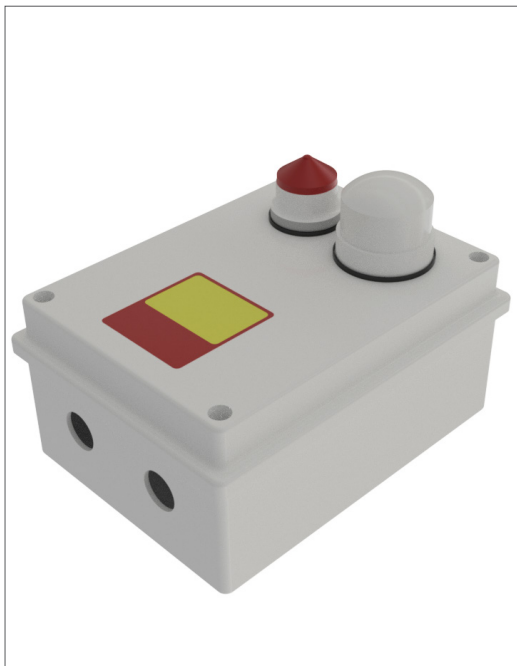


# GEP ALARM DETECTORS

Makes alarm signals visible, audible or reported by SMS



rethinking water



## PRODUCT DESCRIPTION

The GEP Alarm device is a measuring and monitoring device for monitoring a pump system. In a simple manner the detector can be connected to the potential output of the pump control or controlled by a float switch.

## SCOPE

Wherever a high or low water alarm has to be acoustically and visually transmitted.

## TECHNICAL DATA

Voltage:	230 V AC / 50 Hz
Length in mm:	160
Width in mm:	120
Depth in mm:	110



## PRODUCT DESCRIPTION

The GEP GSM SMS Alarm device alarms (maximum) five numbers with an SMS and / or call via the built-in GSM module. A 'confirmation' by the receiver ensures that the other contact persons are no longer called. The GEP GSM SMS Alarm device works longer than a year on a set of batteries. With low battery Spannung, the GEP GSM SMS Alarm caller sends an SMS. When using an external power source (12 VDC or mains), it also sends 'power failure' message; often this is a first indication that something is wrong on the spot. Every pump system with potential-free output can be connected to the GEP GSM SMS Alarm device.

The GEP GSM SMS Alarm detector has various settings options, such as choice for SMS and / or call, automatic on and off times, free alarm text, alarm delays, test messages, etc. Batteries are included. The GEP GSM SMS Alarm device only needs a SIM card from a random (local) provider. (Not included in delivery)

## SCOPE

Everywhere a high or low water alarm should be transmitted acoustically and visually to one or more telephones.

## TECHNICAL DATA

Voltage:	12V CR123 Lithium
Length in mm:	80
Width in mm:	60
Depth in mm:	30

## ORDERING INFORMATION

Art nr	NAME	PG
402140	GEP visual + acoustic alarm including high water float	4
402132	GEP GSM SMS Alarm device	4
402139	GEP visual + acoustic alarm 230-400V for WW2	4

